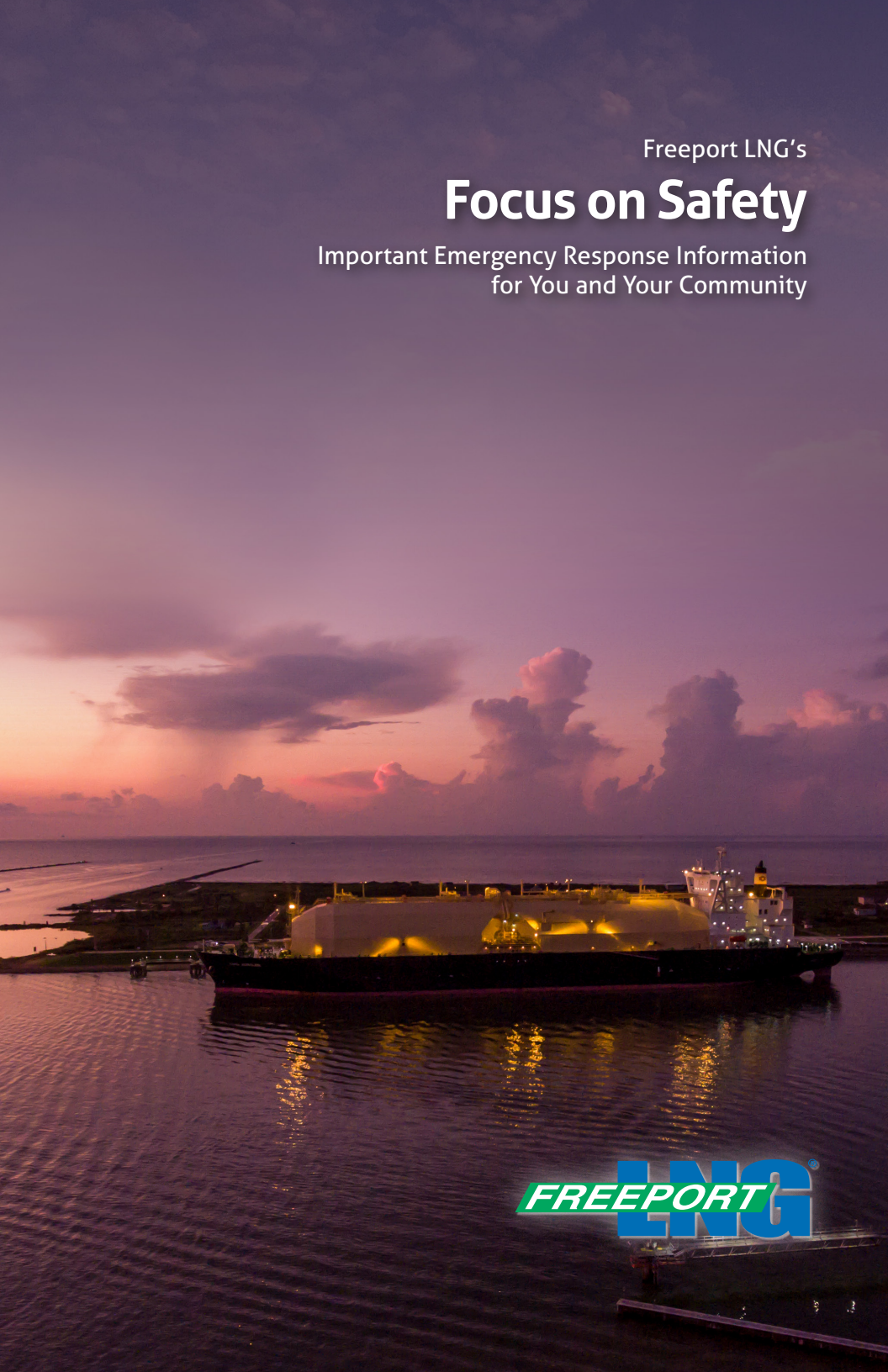


Freeport LNG's

# Focus on Safety

Important Emergency Response Information  
for You and Your Community



**FREEPORT** **LNG**<sup>®</sup>

# What You Need to Know

Diligence, hard work, and an unrelenting focus on safety is the foundation of Freeport LNG's business. Through dedicated and deliberate operational processes, training, testing, and safety systems, we strive daily to prevent incidents at our facilities. All of the Freeport LNG Facilities have been constructed to meet or exceed government and industry standards, are monitored around the clock with sophisticated sensors and technology, and inspected regularly to ensure the safety of the public and our employees.

This informational brochure explains what residents, workers, and visitors in the areas immediately surrounding the Freeport LNG Facilities should know and do if an emergency should occur. Keep this brochure in a convenient place for easy reference. If after reading this brochure you still have questions concerning safety information, please call **Freeport LNG's Public Information Officer at 1-800-303-6545.**



Prepared by:  
Freeport LNG Development, L.P.  
1602 CR 723  
Quintana, Texas 77541  
Copyright © 2023



# Freeport LNG Facilities Safety

## Freeport LNG Facilities Overview

Freeport LNG owns and operates natural gas and liquefied natural gas (LNG) transport, storage, pretreatment, and liquefaction facilities located between Quintana Island and Stratton Ridge, Texas. Freeport LNG's Facilities include the Stratton Ridge Meter Station, Stratton Ridge Underground Storage Facility, Pretreatment Facility, Storage and Trucking Facility, Liquefaction (LQF) Terminal, and interconnecting pipelines that span approximately 13 miles.

## Safety Measures Across all Facilities

Although some Freeport LNG Facilities contain materials that could potentially impact areas outside of Freeport LNG control during an emergency situation, Freeport LNG takes every precaution to ensure these materials are handled safely. In addition to having detailed security plans required by the U.S. Coast Guard, and being inspected regularly to ensure federal safety and security regulations, all Freeport LNG Facilities are equipped with numerous safety and security measures such as:

- 24-7 monitoring systems
- Back-up generators
- Remote shut down capabilities
- Fire and motion detection alarms
- Fire suppression systems

- Perimeter security fences
- Spill containment systems
- Visual field inspections
- High-level training protocols for employees

## Freeport LNG Pipelines

Pipelines are the safest and most efficient means of transporting natural gas products, according to National Transportation Safety Board statistics. These pipelines provide about 24 percent of all the energy used in the United States. Most pipelines are underground, where they are more protected from the elements and interfaces with surface users are minimized. Even so, pipeline right-of-ways are clearly identified by pipeline markers along pipeline routes, which may be found at road crossings, fence lines, and street intersections. Pipeline markers identify the approximate—NOT EXACT—location of the pipeline and also contain Freeport LNG Company information, type of product transported, and the emergency contact number. Call 811 to identify the location of pipelines and before you begin any project that involves digging.



# LNG Safety Facts

## What is LNG?

LNG is made up of several hydrocarbon gases, but mainly methane. This gas mixture is cooled until it condenses into a liquid form. The LNG is transported and stored at atmospheric pressure and at a temperature of negative 260 degrees Fahrenheit. In this state, LNG is one of the safest forms of energy to transport and store. LNG is only present at the LQF Terminal, and not at any of the other Freeport LNG Facilities.

## LNG Safety

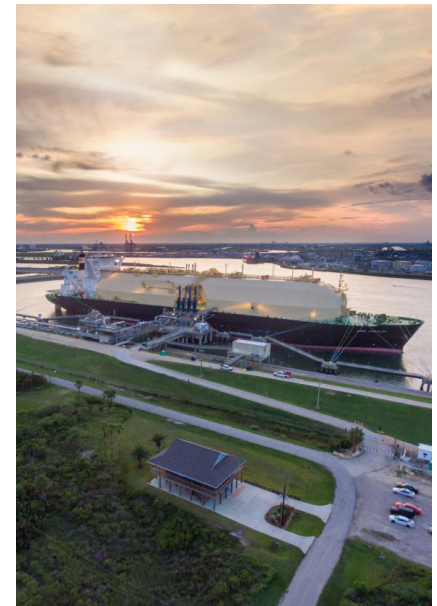
Safety remains core to the U.S. LNG export industry. Freeport LNG and the industry as a whole are committed to working with regulators to ensure that LNG facilities operate safely. The Center for Liquefied Natural Gas (CLNG) is a notable resource for providing information related to the safety of LNG and the LNG industry as a whole.

## Would an LNG spill harm the environment?

Since LNG vaporizes quickly and completely dissipates because it is lighter than air, no pollution to land and/or water resources would occur from an LNG spill.

## Do LNG Ships have Safety Features?

LNG transport vessels incorporate numerous state-of-the-art safety and design features. Double hulls to protect against leakage are heavily insulated, and some of the most sophisticated radar and global positioning systems have been included in the ships' navigation and guidance systems. These systems are designed to detect hazards and to alert the crew to unsafe sailing conditions. LNG tankers are also designed with extensive gas detection and fire suppression systems that are automatically activated in the event of an emergency.





# Emergency Response

## Why do I need to know about the Integrated Contingency Plan?

Local, state, and federal agencies studied and evaluated possible emergency scenarios at the Freeport LNG Facilities as well as while an LNG ship is in transit to or from the LQF Terminal.

The steps and actions to be taken in these situations are included in the Freeport LNG Facilities Integrated Contingency Plan, which is updated annually. The plan is in place to facilitate rapid response to possible emergency scenarios, including access by emergency vehicles and the orderly exit of citizens from the area immediately surrounding a Freeport LNG Facility.

When an incident cannot immediately be assessed as fully contained within the boundaries of the Freeport LNG Facilities and/or has a reasonable likelihood of escalating and moving beyond the boundaries of the Freeport LNG Facilities, 911 will be notified out of an abundance of caution and the Integrated Contingency Plan and Incident Command System will be initiated. When Freeport LNG can immediately assess an incident as fully controlled and contained within the boundaries of the Freeport LNG Facilities, Freeport LNG will not require action from the public.

## What do I do in case of emergency?

Response actions vary depending on the extent and location of an incident. They may be in the form of:

- No action
- Shelter-in-Place
- Temporary Relocation
- Partial or Temporary Evacuation
- Full Evacuation

In the event of a public emergency you should always shelter in place first and await instructions from emergency management. It is critical that you cooperate fully with authorities responding to an emergency.

## How will I be notified of an emergency related to a Freeport LNG facility.

In the unlikely event of an emergency affecting the area surrounding a Freeport LNG Facility or an LNG ship the public will be notified of an emergency in one or a combination of the following ways depending on the magnitude and extent of the incident:

- **CAER Alarm** - Public notification through the area-wide Community Awareness Emergency Response (CAER) system. The CAER system employs audible alarms in local communities to warn residents of an emergency. Depending on the situation, the CAER system could

also be used to broadcast verbal information, similar to radio, social media, and television broadcasts. The CAER telephone line is: 979-238-CAER (2237)

## Are you registered with CAER?

Visit the Brazosport CAER website at: [www.brazosportcaer.com](http://www.brazosportcaer.com) to register to receive and review their notifications.

The Freeport LNG Facilities contain in-plant alarms that are routinely tested and at times may be heard outside of the facility boundaries. However, these alarms are *not* intended to initiate action by the public. The CAER alarms are tested every Monday at 12:10 p.m. If you should hear these alarms at any other time than Monday at 12:10 p.m., please hold in place and immediately contact CAER and local officials, from whom you will learn whether the alarm pertains to your area and receive further instructions.

- **Local law enforcement and emergency response** - Freeport LNG will contact the Brazoria County Office of Emergency Management and the applicable Police Department and/or Fire Department if an incident occurs. These agencies will be used to help broadcast

emergency instructions by mobile public address systems, bullhorns and, in some circumstances, by visiting homes. The Brazoria County Office of Emergency Management utilizes an Internal Public Awareness System to make notifications to mobile devices.

All these agencies are manned 24/7 and are best suited to respond in the event of an emergency.

- **Emergency Alert System Broadcasts**

Emergency public notifications are broadcast on KTRH AM 740 and KUHF FM 88.7. Additional public information may be disseminated to the media, public and other stakeholders via the Freeport LNG website and the applicable town/city's notification system.

## Are you registered with your town/city's notification system?

Please visit your town/city's website or local city hall for more information.

- **Marine Radio Broadcasts**

If there is an incident on a vessel in transit, the vessel master or assigned pilot may issue marine broadcasts on Channel 16, informing waterway users of the incident. Once the USCG Sector Houston Galveston Command Center is notified, they will assist in making necessary broadcasts to mariners.



---

## Evacuation

Most emergencies that could occur at the Freeport LNG Facilities would not require an evacuation and may consist only of temporarily relocating people. If a public evacuation is ordered, local police, sheriff deputies, state police, and other emergency agencies will be dispatched to the affected area and the government agencies involved will notify the public of the evacuation.

There are no schools nearby any of the Freeport LNG Facilities. If any incident could possibly spread to potentially impact a school, notification would be made by the local authorities through incident command. If an evacuation of areas surrounding the Freeport LNG Facilities is required, incident management officers will provide evacuees with instructions, which could include assembling at temporary assembly areas identified by emergency personnel (see map on page 11 for those identified on Quintana Island) or making an orderly exit along the closest evacuation route (see evacuation route maps shown on pages 12 through 15 of this booklet).

---

## Be Prepared

Advance planning is key to emergency response. Evacuation transportation arrangements for individuals with special needs should be made in advance, to avoid last-minute confusion by registering with 2-1-1. Those individuals should make their needs known to the community in which they live. If your location or needs change, remember to update your arrangements and notify 2-1-1.

Take time to prepare a disaster plan for the safety and well-being of your family and your pets. Use the checklist in this brochure to help you prepare and have an evacuation kit packed and ready to take with you if advised to evacuate.

---

## All Clear Notifications

When the incident has been cleared and the conditions are determined to be safe, Freeport LNG will communicate to CAER and the applicable town/city that the emergency has ended. In the event media announcements were initially made, Freeport LNG will provide an "all clear" to the media outlets.

Residents who have been required to leave their homes should call their local police department to get the most up-to-date information and to obtain the 'go-ahead' to return to their homes. Freeport LNG will stay in contact with all applicable local emergency agencies.

# Area Emergency Numbers

## Brazosport Community Awareness &

**Emergency Response . . . . . 979-238-CAER (2237)**

**Brazoria County Sheriff's Office . . . . . 979-265-9310**

**CHI St. Luke's Health - Brazosport Hospital, Lake Jackson . . . . . 979-297-4411**

**Freeport Police Department, Fire Department and EMS . . . . . 979-239-1211**

**Freeport LNG Pipeline Emergencies . . . . . 1-800-794-0981**

**Oyster Creek Police Department . . . . . 979-233-8481**

**Oyster Creek City Hall . . . . . 979-233-0243**

**Quintana City Hall . . . . . 979-233-0848**

**Surfside Beach City Hall . . . . . 979-233-1531**

**Surfside Police Department . . . . . 979-239-1151**

## Emergency Evacuation Checklist

Try to gather and know where these items are before you are asked to evacuate. Preparation is important.

### Emergency Kit

- First Aid Kit
- Toolbox
- Portable radio
- Flashlight
- Extra batteries
- Spare car keys

### Transportation

- Maintain your car in good running condition.
- Keep enough gas in your vehicle's tank to get you clear of the area.
- If you have special transportation needs, register with 2-1-1, notify your local emergency response agency or fire department and they will assist you.

### Possible Evacuation Essentials

- Medical supplies (prescriptions, other medication, First Aid Kit, etc.)
- Money (cash, checkbook, credit cards and other important personal and financial documents)
- Personal hygiene items (toothbrush, soap, shaving supplies, eye-care supplies, washcloth and towels)
- Clothing (for 2-3 days)
- Childcare and infant supplies (formula, diapers, favorite toys)
- Blankets, sleeping bags, and pillows
- Portable radio and batteries
- Special foods or diet supplies
- Nonperishable food
- Pet supplies, including pet food, medicine required for a pet, leashes or pet carriers
- This pamphlet with evacuation assembly areas and route maps

# Helpful Hints if You Are Told to Evacuate

**Don't panic, stay calm.** Freeport LNG personnel and emergency response agencies are experienced in responding to and mitigating incidents.

**Take only essential items with the time you have.** Medications, infant essentials and money/financial documents are examples. Use the Checklist in this pamphlet as a guide for things that you may wish to have packed prior to any order to evacuate. If you are told to evacuate, DO NOT take time to pack these items (other than medically necessary items) after the order is given; preparation prior to being told to evacuate is key.

**If you must evacuate, remember to take your pets.** You should have a plan for where you would take them in the event you are gone for a length of time.

**Turn off all lights and appliances in your residence,** except for refrigerators and freezers.

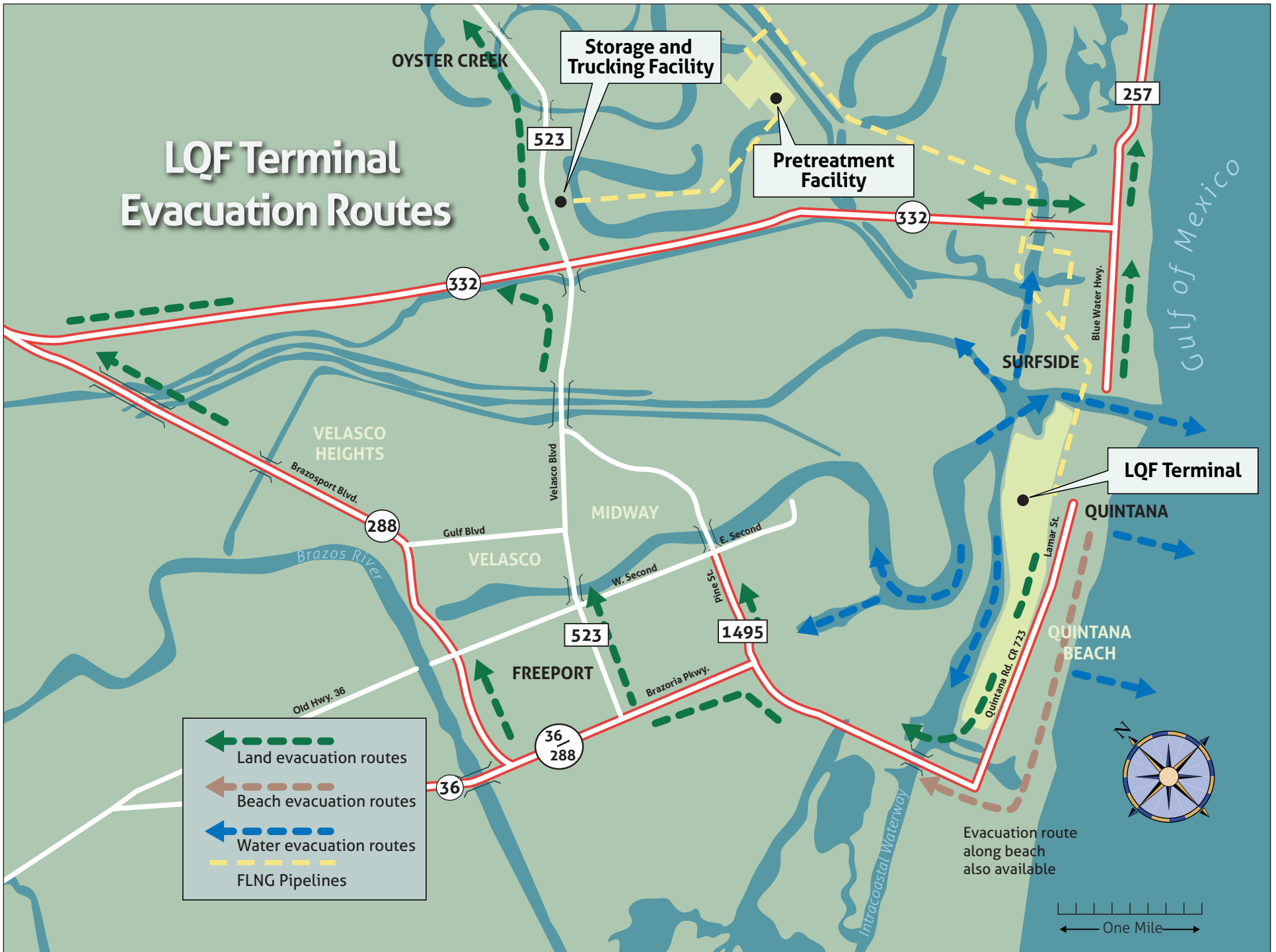
**Lock all doors and windows in your residence, if you have time.**

**Use your own transportation.** Offer rides to those who may require assistance.

**Head for one of the temporary assembly areas and then follow the designated evacuation route.** Follow any instructions provided by emergency response personnel.

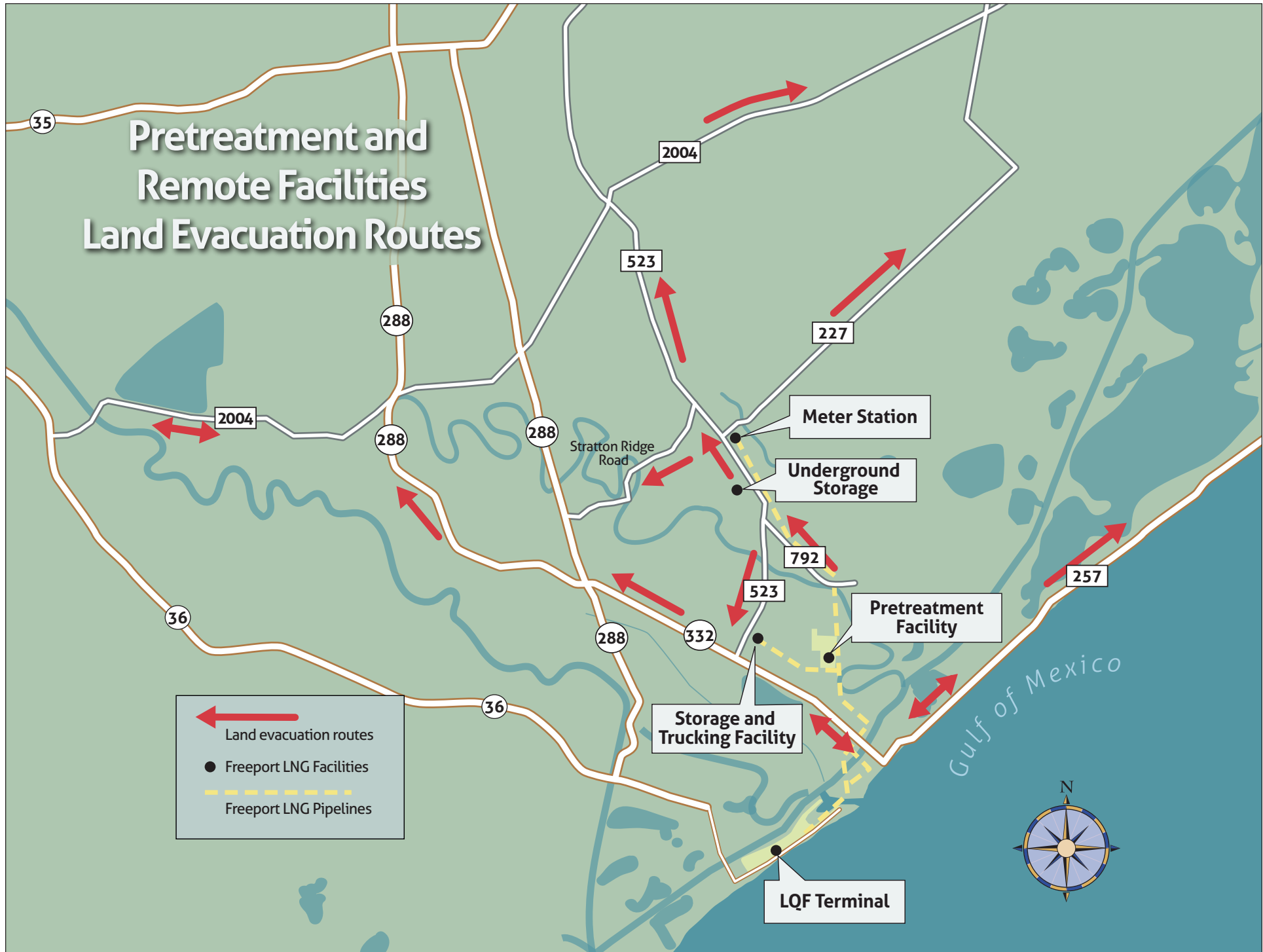


# LQF Terminal Evacuation Routes





# Pretreatment and Remote Facilities Land Evacuation Routes





Freeport LNG Development, L.P.  
1602 CR 723  
Quintana, Texas 77541

